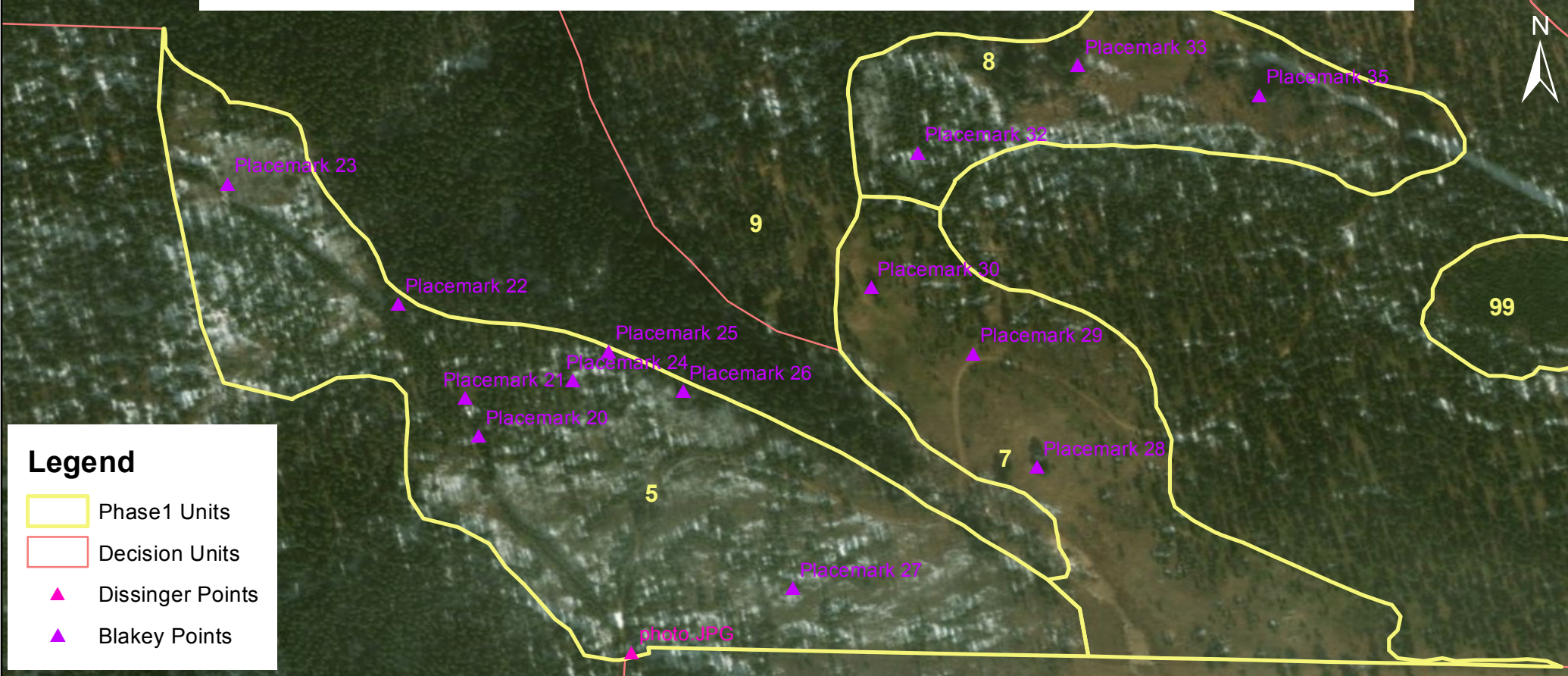


Phase 1 -- Aspen Regeneration Treatment Units 5, 7, & 8



Legend

- Phase1 Units
- Decision Units
- ▲ Dissinger Points
- ▲ Blakey Points

point name	kml file name	collector	description
photo.JPG	Dissinger_20180225_GeotaggedP2	J. Dissinger	Meadow - historic
Placemark 20	Blakey_Forsythell_DecUnits_TopoEnhanced_20180304	Blakey	Trams. From Aspen to LP. 8 inch dia at ch.
Placemark 21	Blakey_Forsythell_DecUnits_TopoEnhanced_20180304	Blakey	Single spruce tree < 30'.
Placemark 22	Blakey_Forsythell_DecUnits_TopoEnhanced_20180304	Blakey	no entry
Placemark 23	Blakey_Forsythell_DecUnits_TopoEnhanced_20180304	Blakey	Open with dense Aspen . Signs of moose eating Aspen.
Placemark 24	Blakey_Forsythell_DecUnits_TopoEnhanced_20180304	Blakey	Possible limber pine?
Placemark 25	Blakey_Forsythell_DecUnits_TopoEnhanced_20180304	Blakey	Skeet on ground - broken and unbroken.
Placemark 26	Blakey_Forsythell_DecUnits_TopoEnhanced_20180304	Blakey	Large (40'+) twin fir on (?) boundary of unit. Orange flag and teal paint on trees just downhill of fir tree.

point name	kml file name	collector	description
Placemark 27	Blakey_Forsythell_DecUnits_TopoEnhanced_20180304	Blakey	Mixed Aspen and pine; open, gentle slope.
Placemark 28	Blakey_Forsythell_DecUnits_TopoEnhanced_20180304	Blakey	Large ponderosa in very open area (25.5" d). Two other large ponderosa near by. Elk scat around.
Placemark 29	Blakey_Forsythell_DecUnits_TopoEnhanced_20180304	Blakey	Large ponderosa in somewhat open level area; mixed short conifer and aspen. Another large ponderosa 60' east.
Placemark 30	Blakey_Forsythell_DecUnits_TopoEnhanced_20180304	Blakey	Perennial stream
Placemark 32	Blakey_Forsythell_DecUnits_TopoEnhanced_20180304	Blakey	Dense conifer - 15 - 20'; gentle to moderate slope.
Placemark 33	Blakey_Forsythell_DecUnits_TopoEnhanced_20180304	Blakey	Old growth fir tree - 31" dia. Large Aspen trees nearby
Placemark 35	Blakey_Forsythell_DecUnits_TopoEnhanced_20180304	Blakey	Old growth spruce - 33" diameter. 2 other old spruces 10 to 15 ft.

