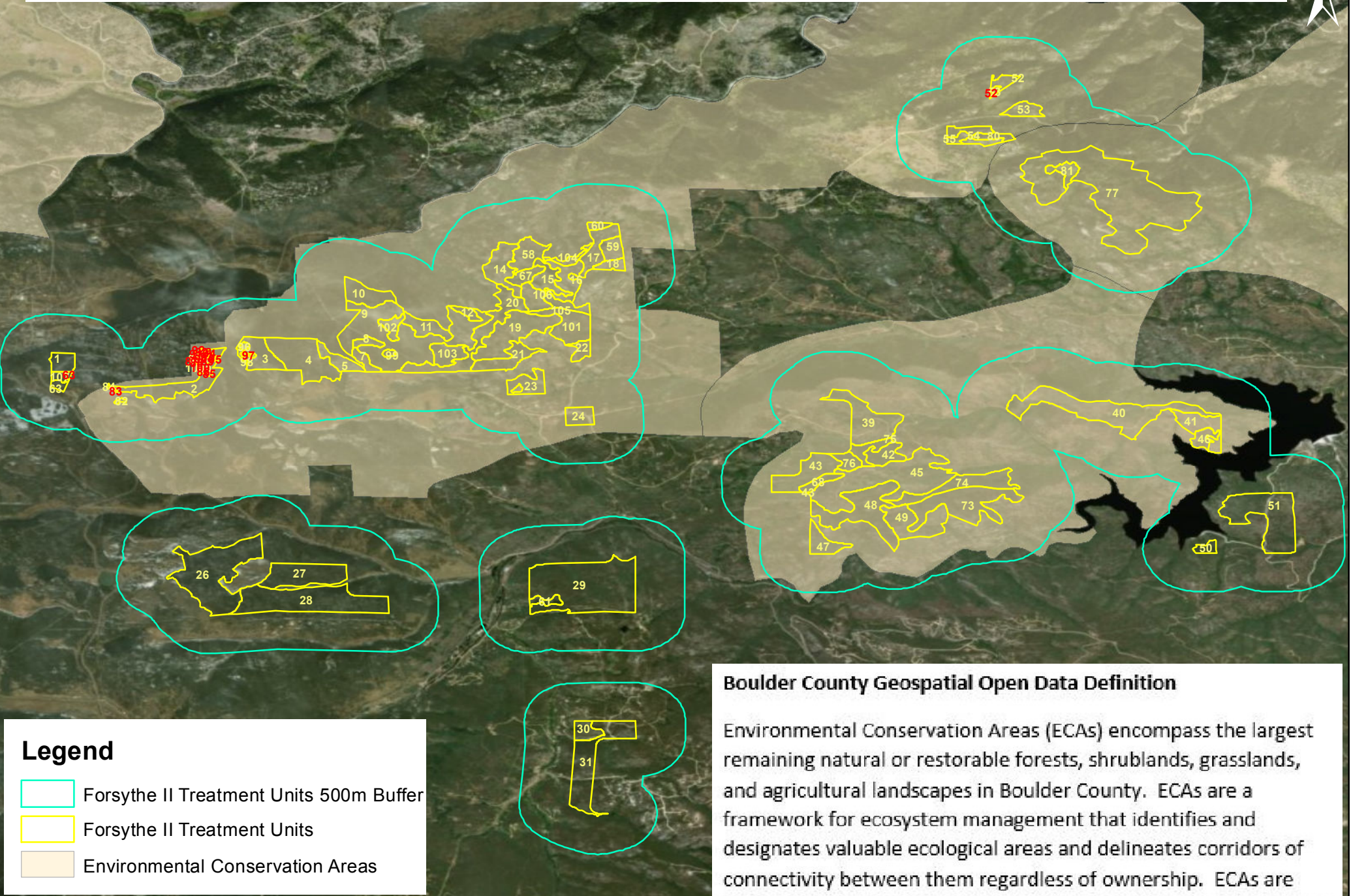





Forsythe II Project: Environmental Conservation Areas



Legend

-  Forsythe II Treatment Units 500m Buffer
-  Forsythe II Treatment Units
-  Environmental Conservation Areas

0 0.75 1.5 3 Miles

Boulder County Geospatial Open Data Definition

Environmental Conservation Areas (ECAs) encompass the largest remaining natural or restorable forests, shrublands, grasslands, and agricultural landscapes in Boulder County. ECAs are a framework for ecosystem management that identifies and designates valuable ecological areas and delineates corridors of connectivity between them regardless of ownership. ECAs are defined and described in the Environmental Resources Element of the Boulder County Comprehensive Plan.