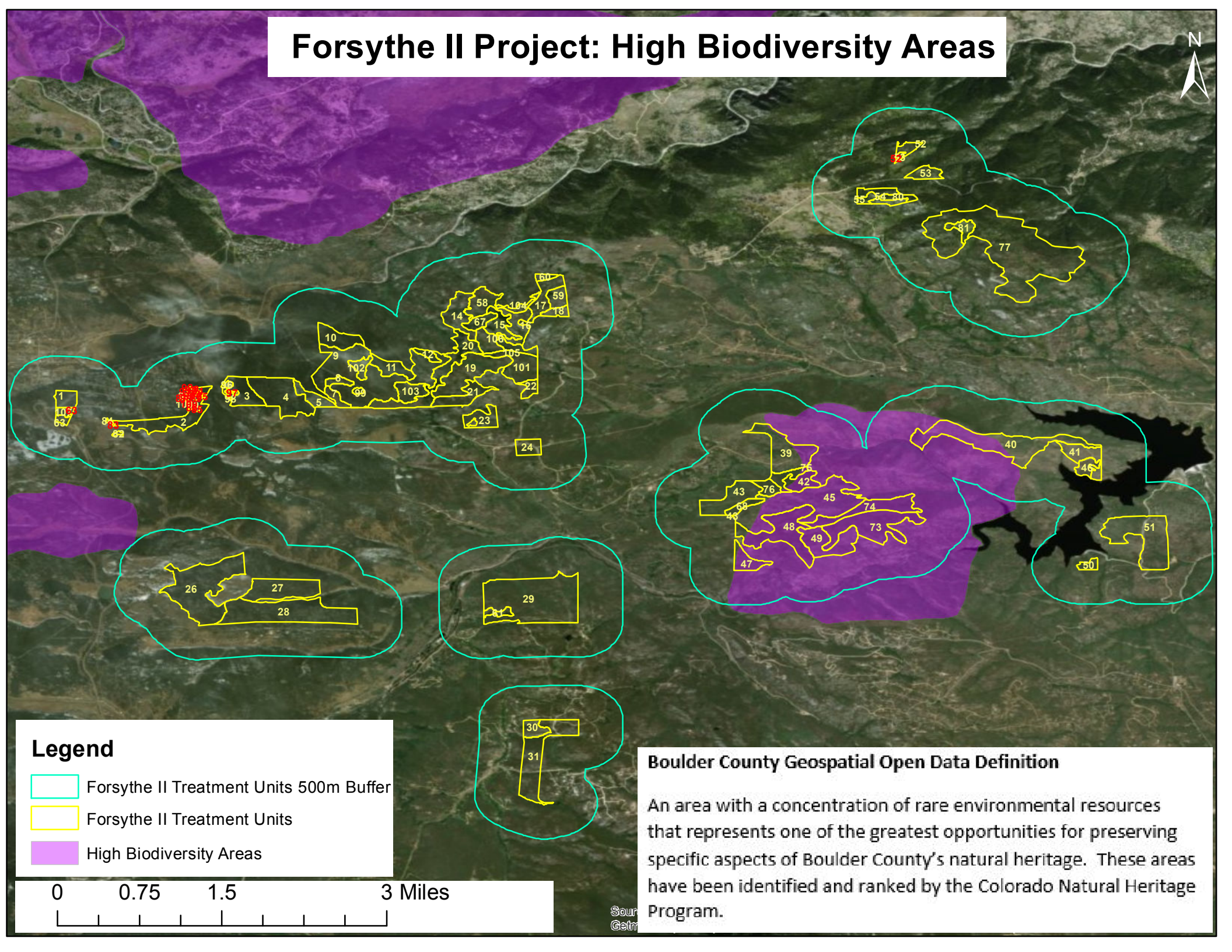





Forsythe II Project: High Biodiversity Areas



Legend

-  Forsythe II Treatment Units 500m Buffer
-  Forsythe II Treatment Units
-  High Biodiversity Areas

0 0.75 1.5 3 Miles

Boulder County Geospatial Open Data Definition

An area with a concentration of rare environmental resources that represents one of the greatest opportunities for preserving specific aspects of Boulder County's natural heritage. These areas have been identified and ranked by the Colorado Natural Heritage Program.