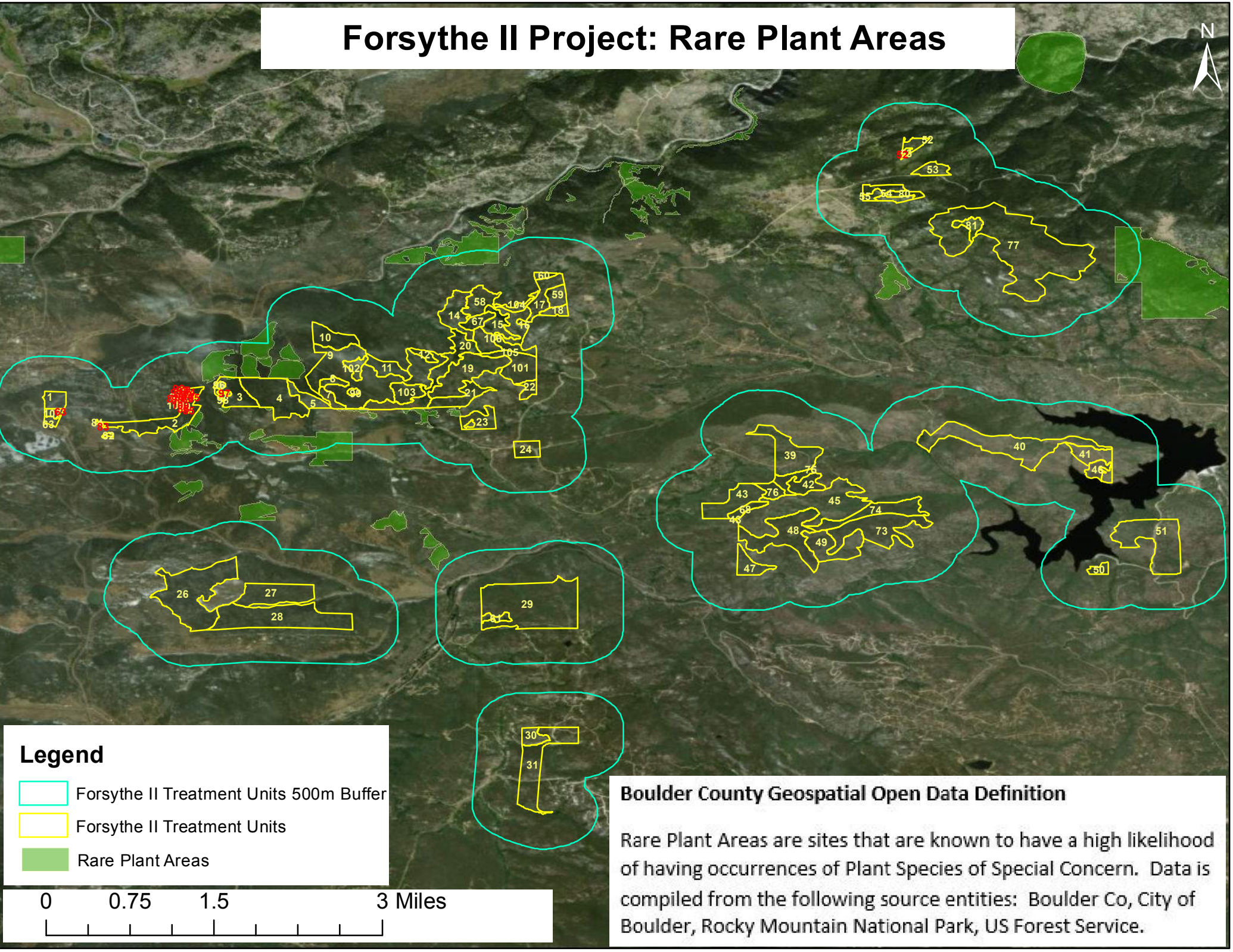




Forsythe II Project: Rare Plant Areas



Legend

-  Forsythe II Treatment Units 500m Buffer
-  Forsythe II Treatment Units
-  Rare Plant Areas

0 0.75 1.5 3 Miles

Boulder County Geospatial Open Data Definition

Rare Plant Areas are sites that are known to have a high likelihood of having occurrences of Plant Species of Special Concern. Data is compiled from the following source entities: Boulder Co, City of Boulder, Rocky Mountain National Park, US Forest Service.