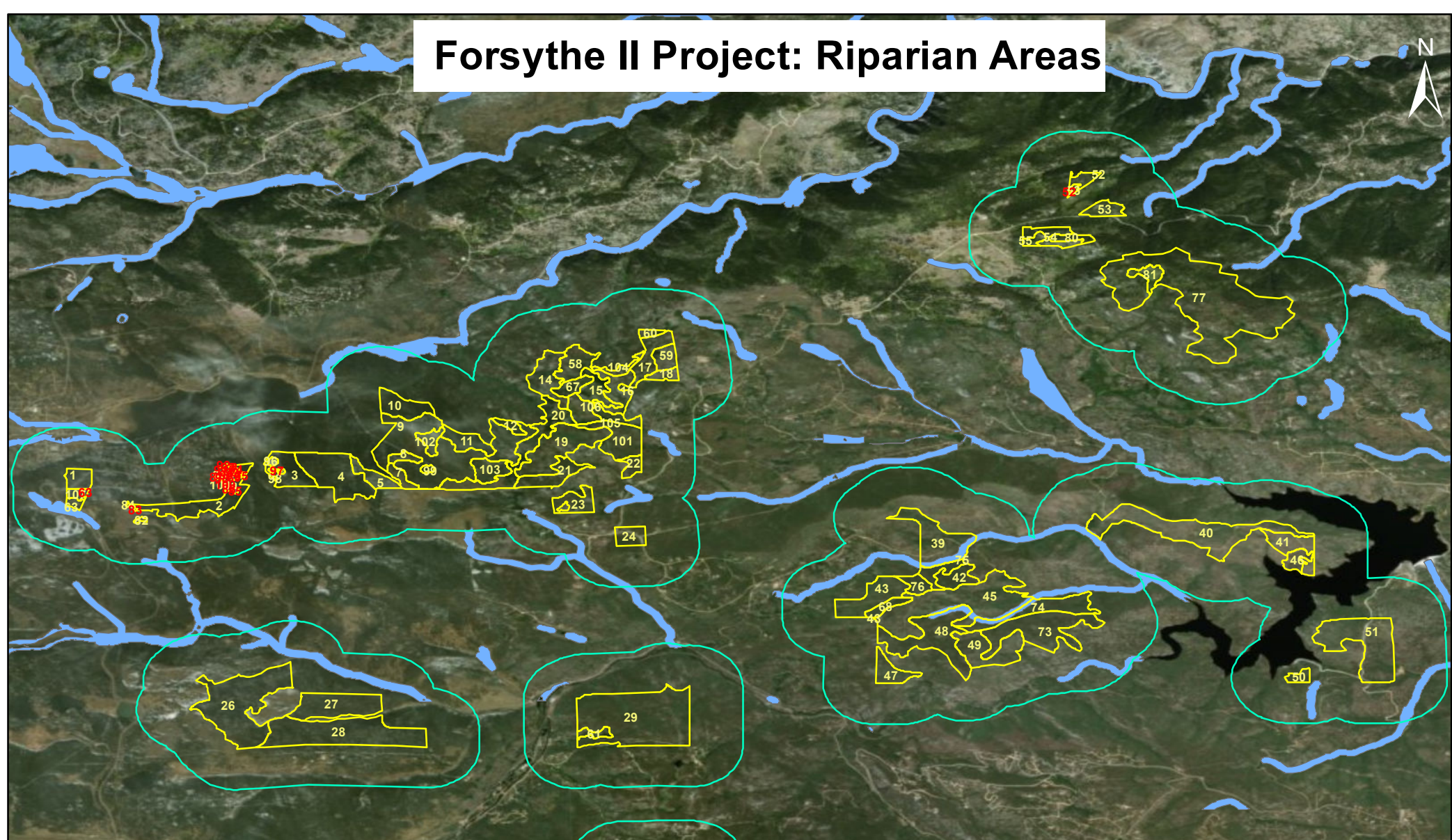


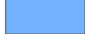
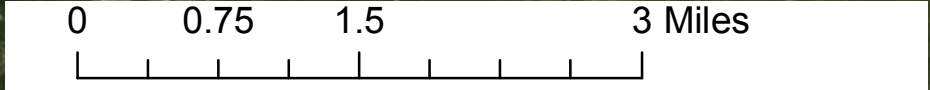


# Forsythe II Project: Riparian Areas



**Legend**

-  Forsythe II Treatment Units 500m Buffer
-  Forsythe II Treatment Units
-  Riparian Areas



**Boulder County Geospatial Open Data Definition**

Riparian Areas are a unique combination of terrestrial plant communities and aquatic systems associated with flowing water that provide unique habitat and important movement corridors for wildlife. Data compiled from the following source entities: Boulder County, City of Boulder, Rocky Mountain National Park, and State of Colorado.