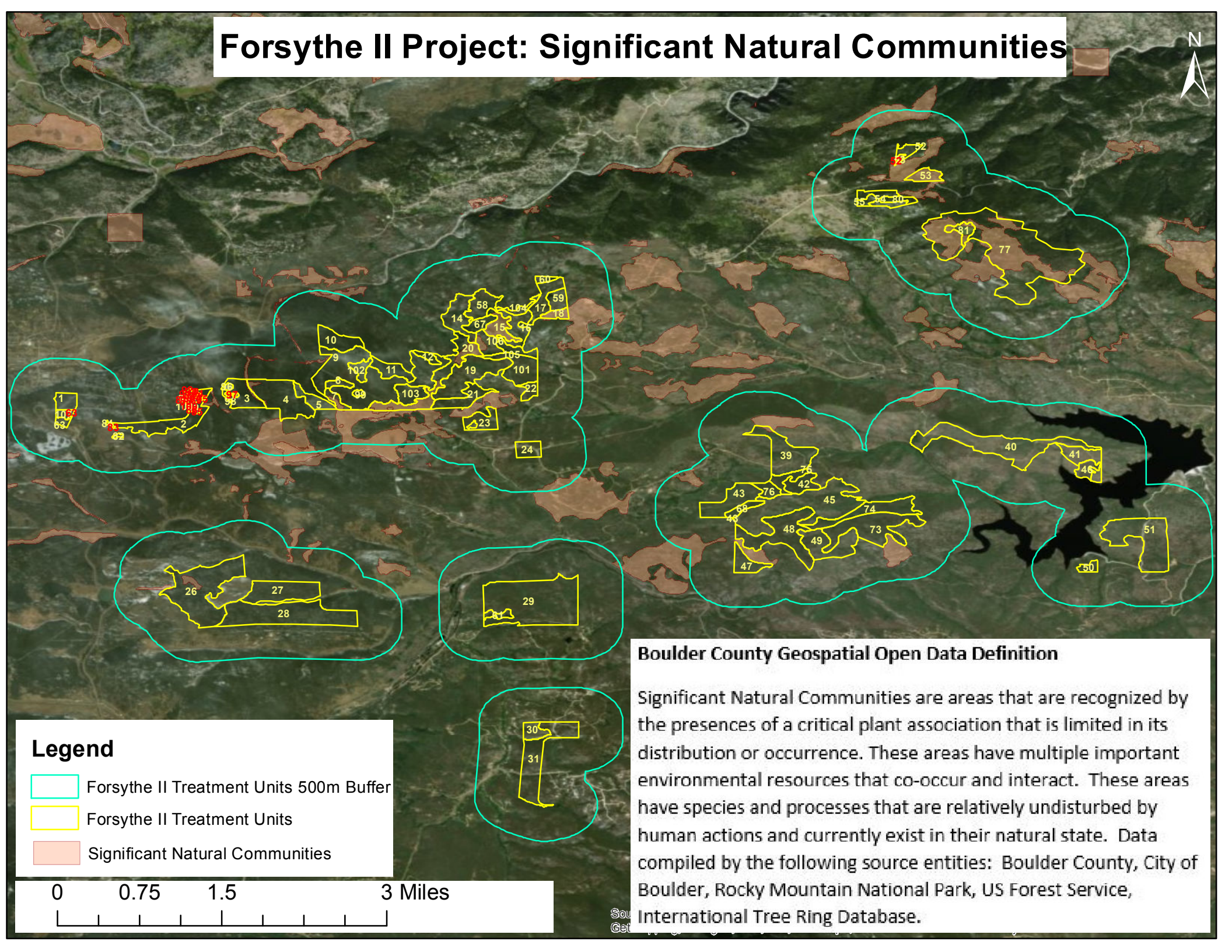





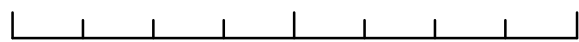
Forsythe II Project: Significant Natural Communities



Legend

-  Forsythe II Treatment Units 500m Buffer
-  Forsythe II Treatment Units
-  Significant Natural Communities

0 0.75 1.5 3 Miles



Boulder County Geospatial Open Data Definition

Significant Natural Communities are areas that are recognized by the presences of a critical plant association that is limited in its distribution or occurrence. These areas have multiple important environmental resources that co-occur and interact. These areas have species and processes that are relatively undisturbed by human actions and currently exist in their natural state. Data compiled by the following source entities: Boulder County, City of Boulder, Rocky Mountain National Park, US Forest Service, International Tree Ring Database.