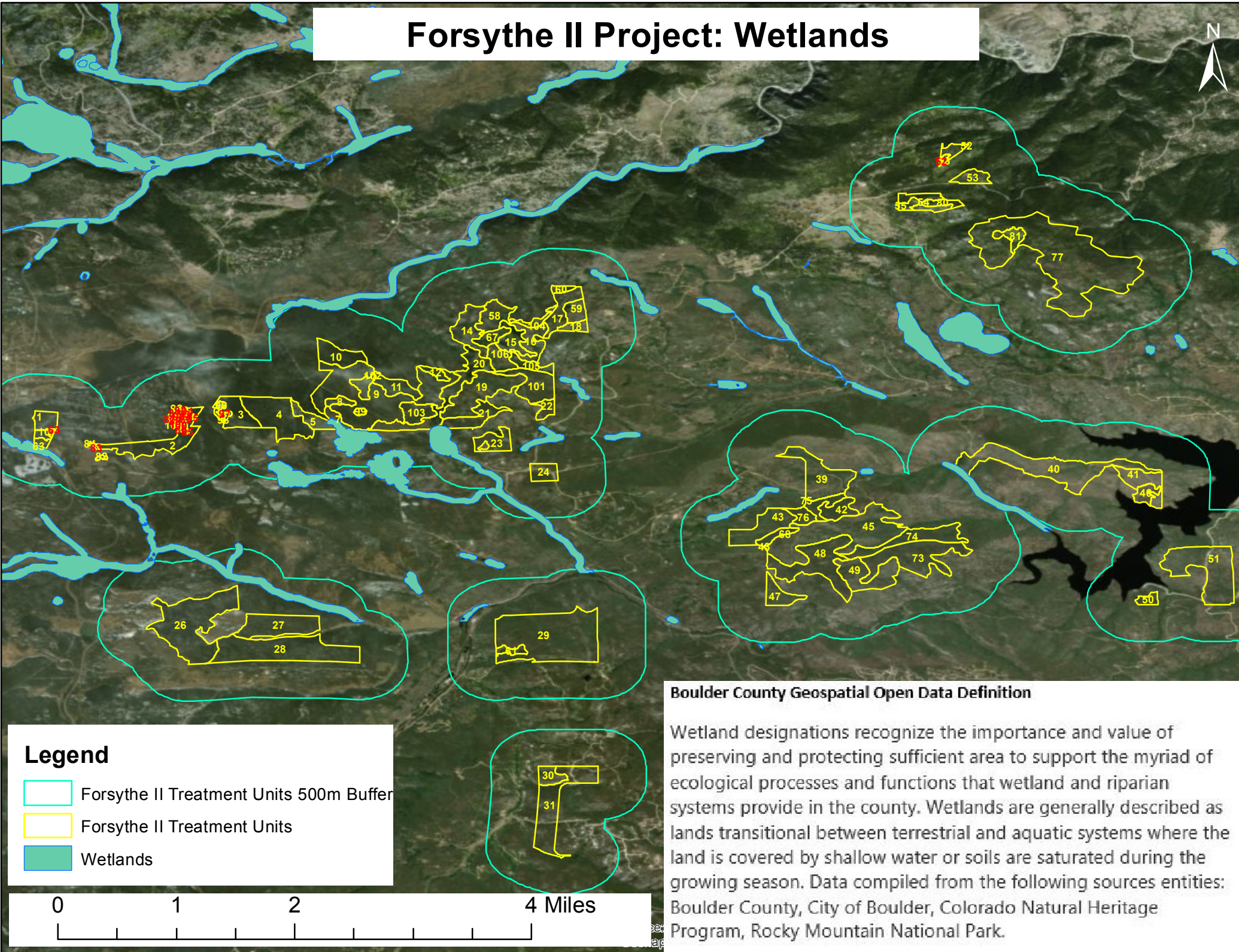





Forsythe II Project: Wetlands



Legend

-  Forsythe II Treatment Units 500m Buffer
-  Forsythe II Treatment Units
-  Wetlands

Boulder County Geospatial Open Data Definition

Wetland designations recognize the importance and value of preserving and protecting sufficient area to support the myriad of ecological processes and functions that wetland and riparian systems provide in the county. Wetlands are generally described as lands transitional between terrestrial and aquatic systems where the land is covered by shallow water or soils are saturated during the growing season. Data compiled from the following sources entities: Boulder County, City of Boulder, Colorado Natural Heritage Program, Rocky Mountain National Park.

