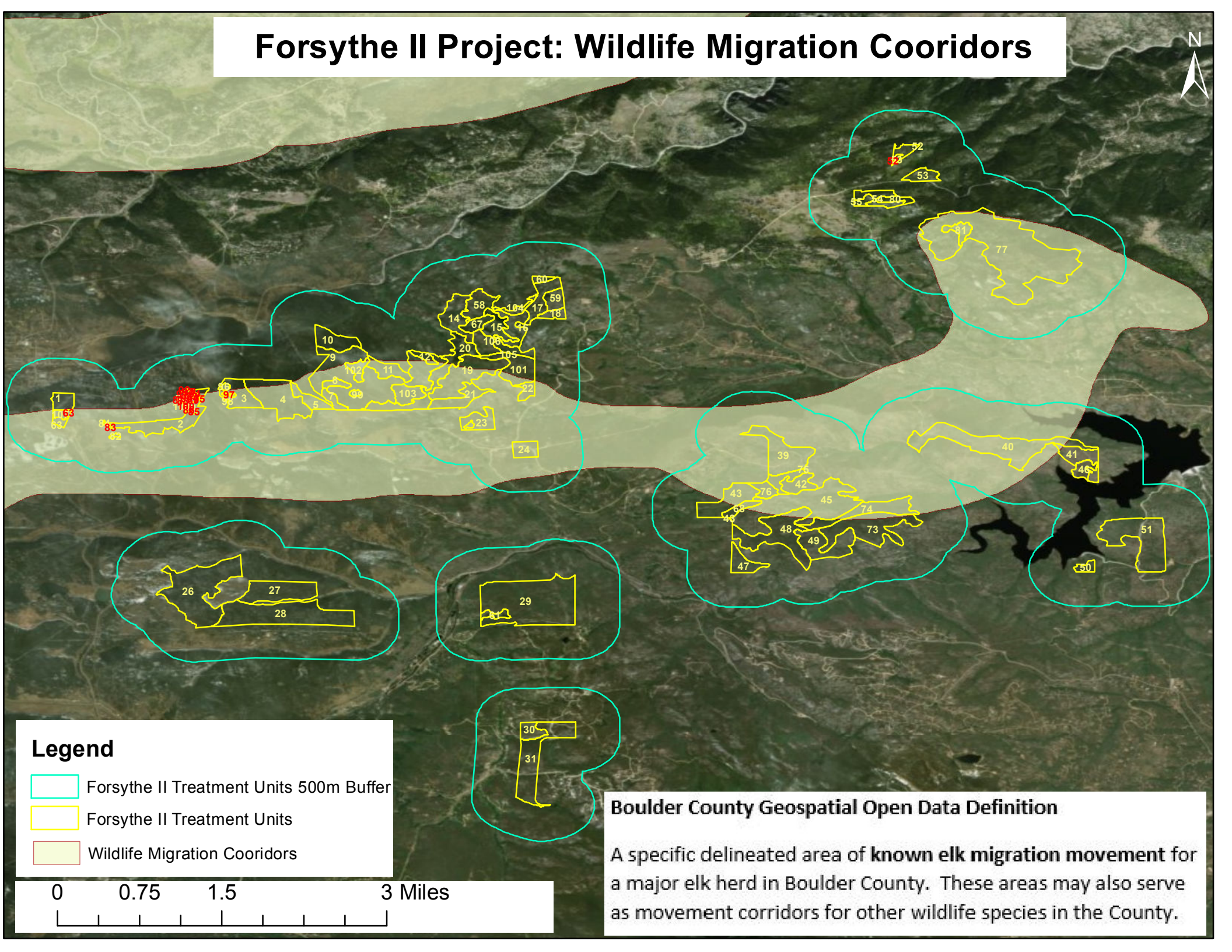





Forsythe II Project: Wildlife Migration Cooridors



Legend

-  Forsythe II Treatment Units 500m Buffer
-  Forsythe II Treatment Units
-  Wildlife Migration Cooridors

0 0.75 1.5 3 Miles

Boulder County Geospatial Open Data Definition

A specific delineated area of **known elk migration movement** for a major elk herd in Boulder County. These areas may also serve as movement corridors for other wildlife species in the County.