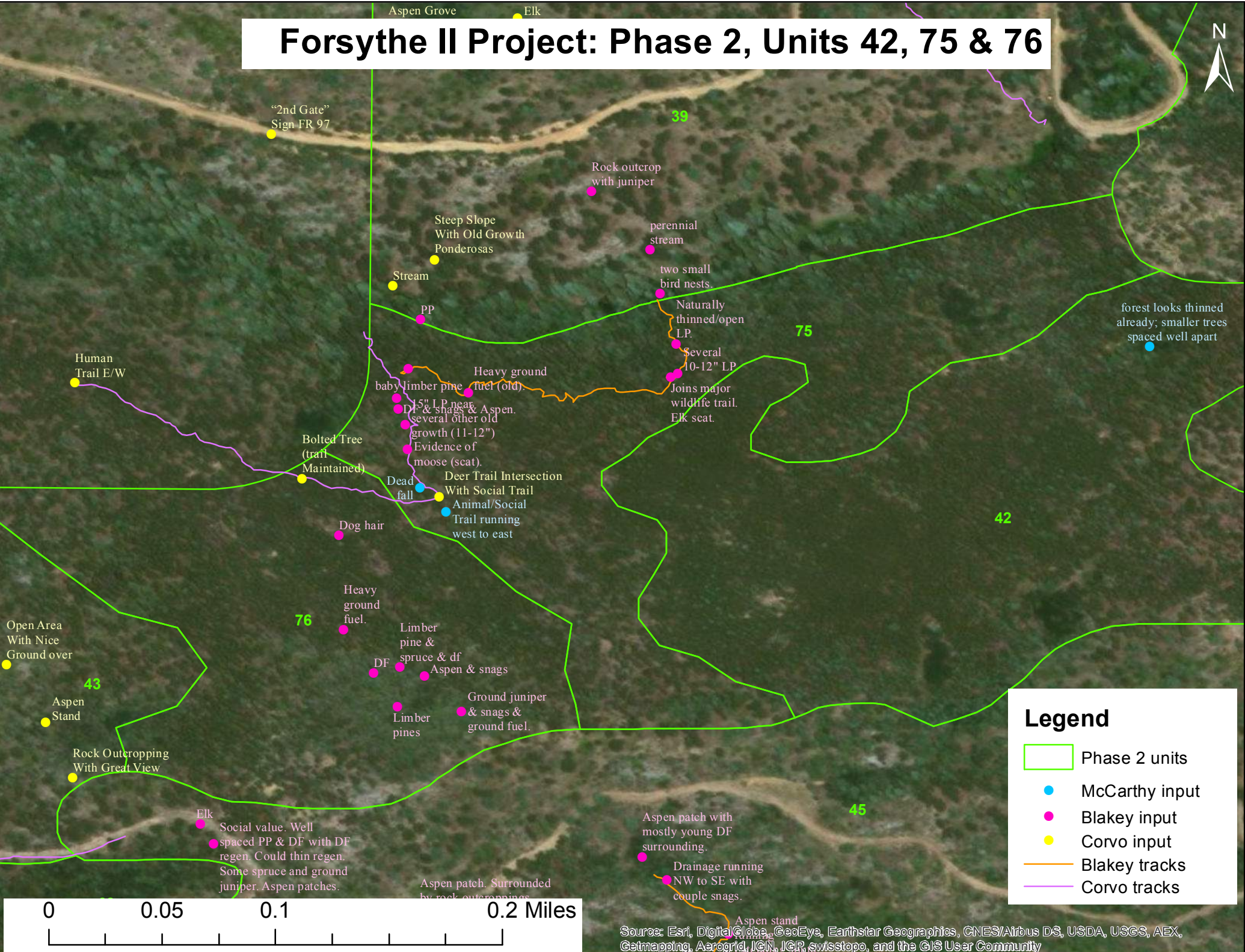


# Forsythe II Project: Phase 2, Units 42, 75 & 76



"2nd Gate"  
Sign FR 97

39

Rock outcrop  
with juniper

Steep Slope  
With Old Growth  
Ponderosas

perennial  
stream

Stream

two small  
bird nests.

75

Naturally  
thinned/open  
LP.

forest looks thinned  
already; smaller trees  
spaced well apart

Human  
Trail E/W

Several  
10-12" LP

Heavy ground  
fuel (old).

Joins major  
wildlife trail.  
Elk scat.

Bolted Tree  
(trail  
Maintained)

baby limber pine  
DF & snags & Aspen.  
(several other old  
growth (11-12")  
Evidence of  
moose (scat).

Deer Trail Intersection  
With Social Trail  
Animal/Social  
Trail running  
west to east

42

Dog hair

76

Heavy  
ground  
fuel.

Limber  
pine &  
spruce & df  
Aspen & snags

Open Area  
With Nice  
Ground over

43

Aspen  
Stand

Ground juniper  
& snags &  
ground fuel.

Rock Outcropping  
With Great View

Elk  
Social value. Well  
spaced PP & DF with DF  
regen. Could thin regen.  
Some spruce and ground  
juniper. Aspen patches.

Aspen patch. Surrounded  
by rock outcroppings

45

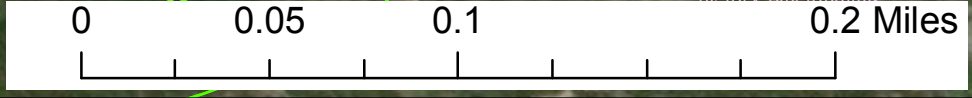
Aspen patch with  
mostly young DF  
surrounding.

Drainage running  
NW to SE with  
couple snags.

Aspen stand

## Legend

- Phase 2 units
- McCarthy input
- Blakey input
- Corvo input
- Blakey tracks
- Corvo tracks



Source: Esri, DigitalGlobe, GeoEye, Earthstar Geographics, CNES/Airbus DS, USDA, USGS, AEX, Getmapping, Aerogrid, IGN, IGP, swisstopo, and the GIS User Community