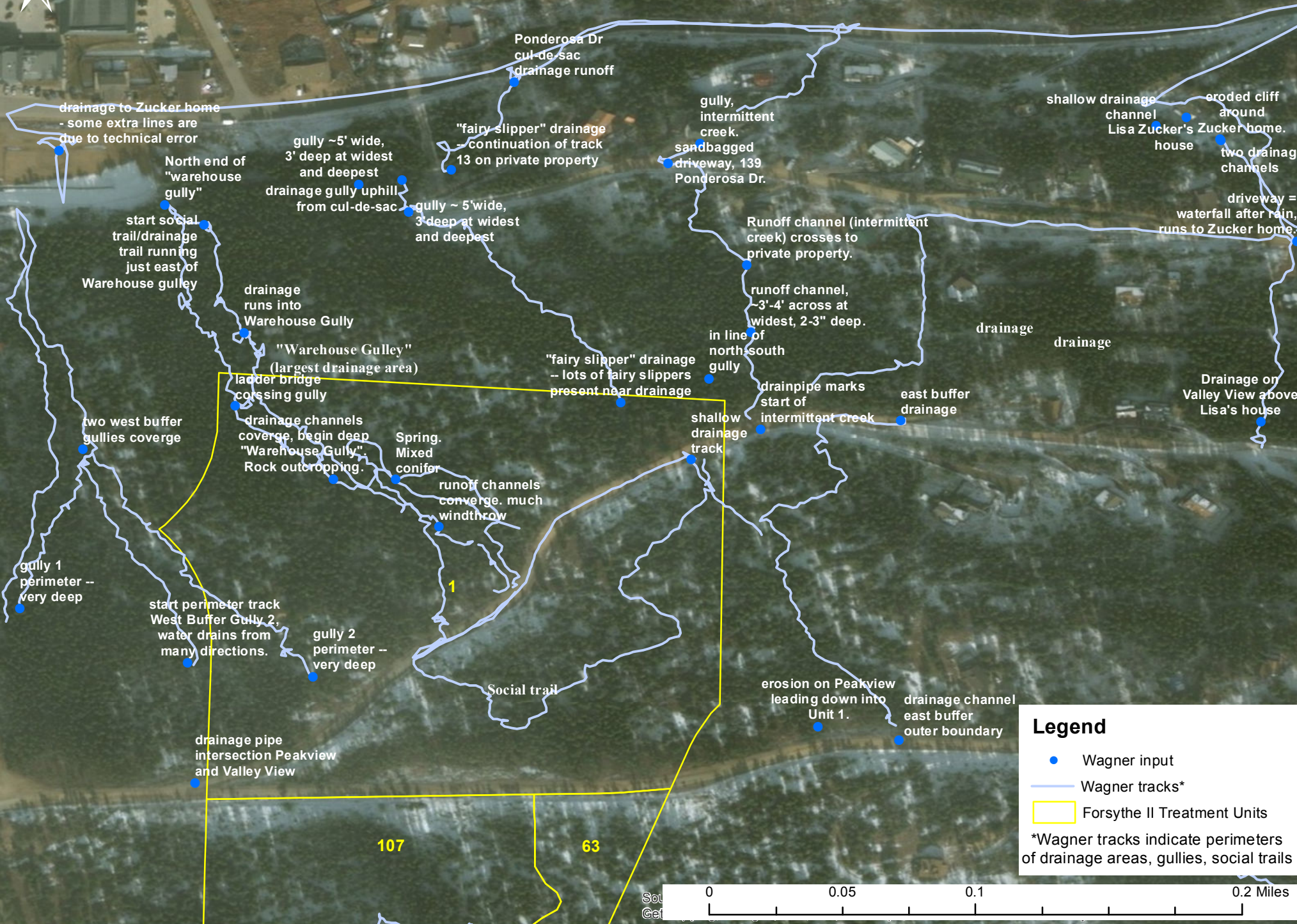


# Forsythe II Project: Unit 1 -- Drainage Issues



drainage to Zucker home - some extra lines are due to technical error

North end of "warehouse gully"

start social trail/drainage trail running just east of Warehouse gully

gully ~5' wide, 3' deep at widest and deepest

drainage gully uphill from cul-de-sac

"fairy slipper" drainage - continuation of track 13 on private property

gully ~5' wide, 3' deep at widest and deepest

gully, intermittent creek. sandbagged driveway, 139 Ponderosa Dr.

shallow drainage channel Lisa Zucker's house

eroded cliff around Zucker home.

two drainage channels

driveway = waterfall after rain, runs to Zucker home.

Runoff channel (intermittent creek) crosses to private property.

runoff channel, ~3'-4' across at widest, 2-3" deep.

in line of north-south gully

drainpipe marks start of intermittent creek

east buffer drainage

drainage drainage

Drainage on Valley View above Lisa's house

"fairy slipper" drainage -- lots of fairy slippers present near drainage

"Warehouse Gully" (largest drainage area)

ladder bridge crossing gully

drainage channels converge, begin deep "Warehouse Gully." Rock outcropping.

Spring. Mixed conifer

runoff channels converge. much windthrow

shallow drainage track

two west buffer gullies converge

gully 1 perimeter -- very deep

start perimeter track West Buffer Gully 2, water drains from many directions.

gully 2 perimeter -- very deep

Social trail

erosion on Peakview leading down into Unit 1.

drainage channel east buffer outer boundary

drainage pipe intersection Peakview and Valley View

107

63

## Legend

- Wagner input
  - Wagner tracks\*
  - Forsythe II Treatment Units
- \*Wagner tracks indicate perimeters of drainage areas, gullies, social trails

