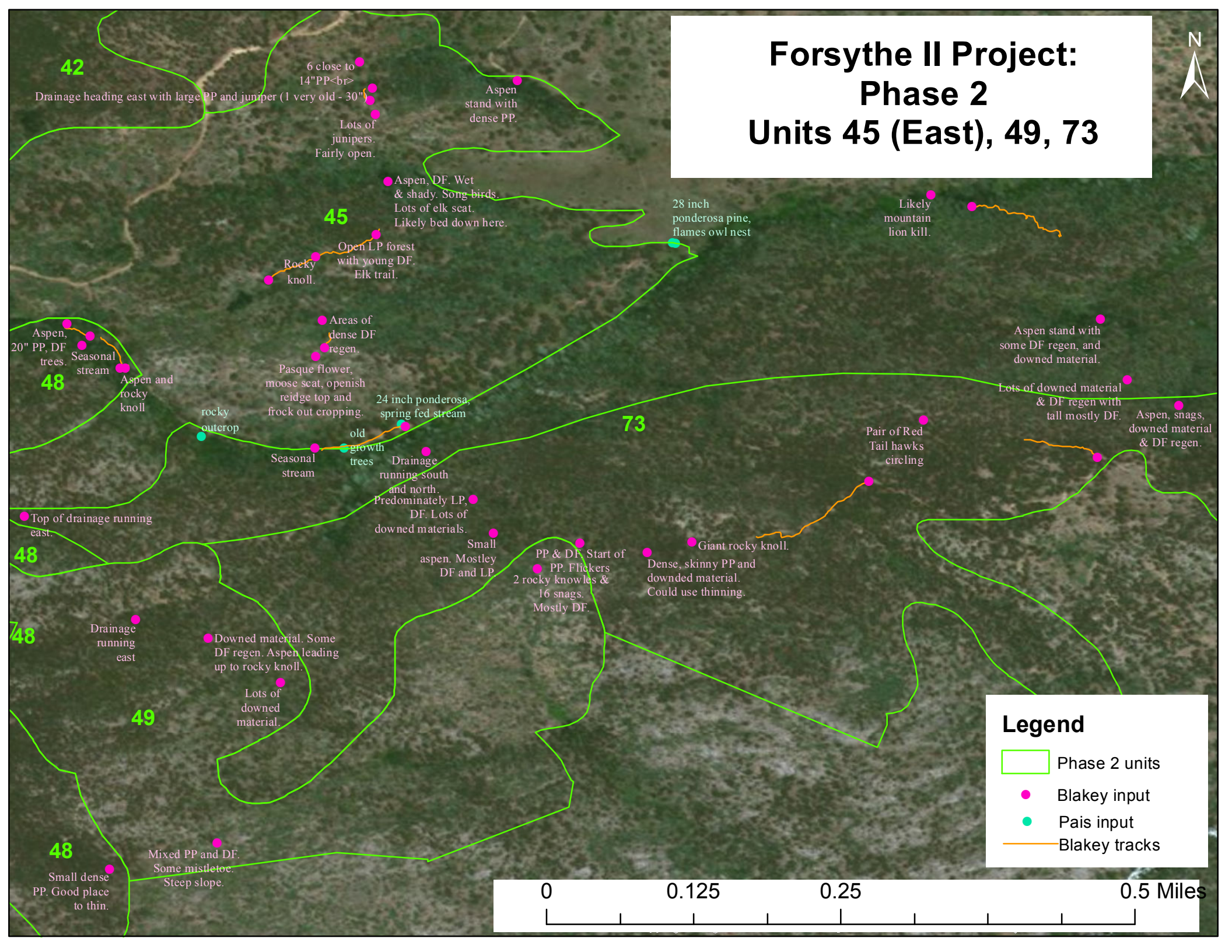


Forsythe II Project: Phase 2 Units 45 (East), 49, 73



42
Drainage heading east with large PP and juniper (1 very old - 30")
6 close to 14" PP
Lots of junipers. Fairly open.

Aspen stand with dense PP.

45
Aspen, DF. Wet & shady. Song birds. Lots of elk scat. Likely bed down here.

28 inch ponderosa pine, flames owl nest

Likely mountain lion kill.

Open LP forest with young DF. Elk trail.
Rocky knoll.

48
Aspen, 20" PP, DF trees.
Seasonal stream
Aspen and rocky knoll

Areas of dense DF regen.

Pasque flower, moose scat, openish ridge top and frock out cropping.

24 inch ponderosa, spring fed stream

Aspen stand with some DF regen, and downed material.

Lots of downed material & DF regen with tall mostly DF. Aspen, snags, downed material & DF regen.

rocky outcrop

Seasonal stream

old growth trees

Drainage running south and north. Predominately LP, DF. Lots of downed materials.

73

Pair of Red Tail hawks circling

Top of drainage running east.

48

Small aspen. Mostley DF and LP

PP & DF. Start of PP. Flickers & 2 rocky knowles & 16 snags. Mostly DF.

Dense, skinny PP and downed material. Could use thinning.

Giant rocky knoll.

48

Drainage running east

Downed material. Some DF regen. Aspen leading up to rocky knoll.

Lots of downed material.

49

48

Small dense PP. Good place to thin.

Mixed PP and DF. Some mistletoe. Steep slope.

Legend

- Phase 2 units
- Blakey input
- Pais input
- Blakey tracks

