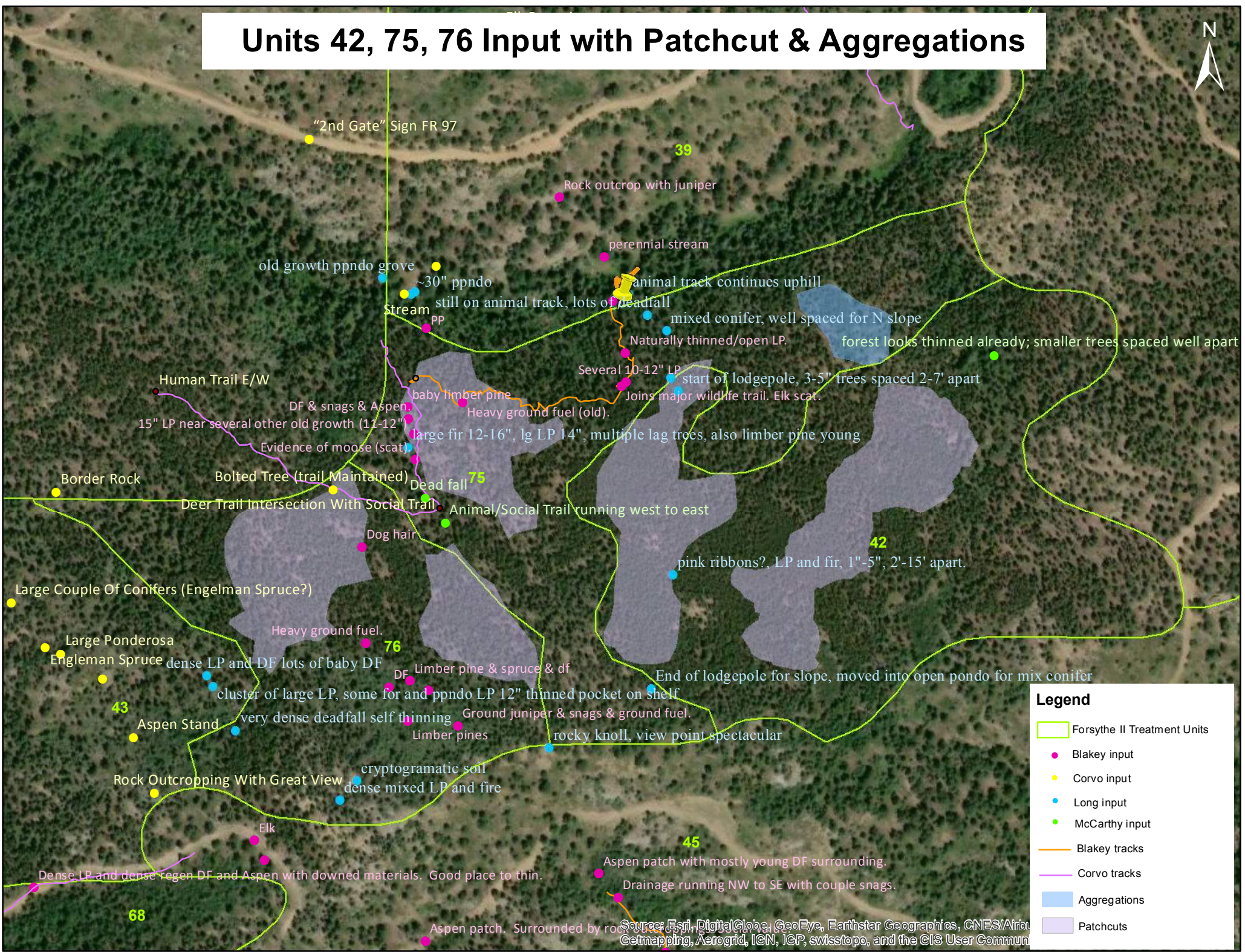


Units 42, 75, 76 Input with Patchcut & Aggregations



Legend

- Forsythe II Treatment Units
- Blakey input
- Corvo input
- Long input
- McCarthy input
- Blakey tracks
- Corvo tracks
- Aggregations
- Patchcuts

Source: Esri, DigitalGlobe, GeoEye, Earthstar Geographics, CNES/Airbus, Getmapping, Aerogrid, IGN, IGP, swisstopo, and the GIS User Community