

## **Appendix E: Public Engagement in Adaptive Implementation**

### **A Process for Adaptive Implementation of the Spruce Beetle Epidemic- Aspen Decline Management Response EIS**



Draft January 06, 2016

Grand Mesa, Uncompahgre, and Gunnison National Forest

USDA Forest Service

In cooperation with:

Rocky Mountain Research Station, USDA Forest Service

Colorado Forest Restoration Institute, Colorado State University

## **INTRODUCTION AND BACKGROUND**

The purpose of this document is to describe activities comprising the adaptive implementation and monitoring framework for the SBEADMR project. The primary goals are to:

- continue the public participation and collaborative learning that occurred during the planning phase, encourage and support the continuation of collaborative workgroup efforts throughout implementation;
- ensure implementation of treatments is responsive to dynamic on-the-ground conditions, new scientific information, and public input;
- demonstrate compliance with management direction specified in the EIS/ROD;
- conduct a transparent adaptive implementation process that keeps the public informed of and involved in treatment unit timing, design, and monitoring;
- ensure integrated engagement of interdisciplinary team members, field personnel, scientists, line officers and the public;
- focus on shared priorities and work to resolve concerns and solve problems related to selection and implementation of SBEADMR treatment units;
- conduct monitoring activities, interpret and share results, adapt implementation practices to improve results and better meet project objectives.

## **ADAPTIVE IMPLEMENTATION FRAMEWORK**

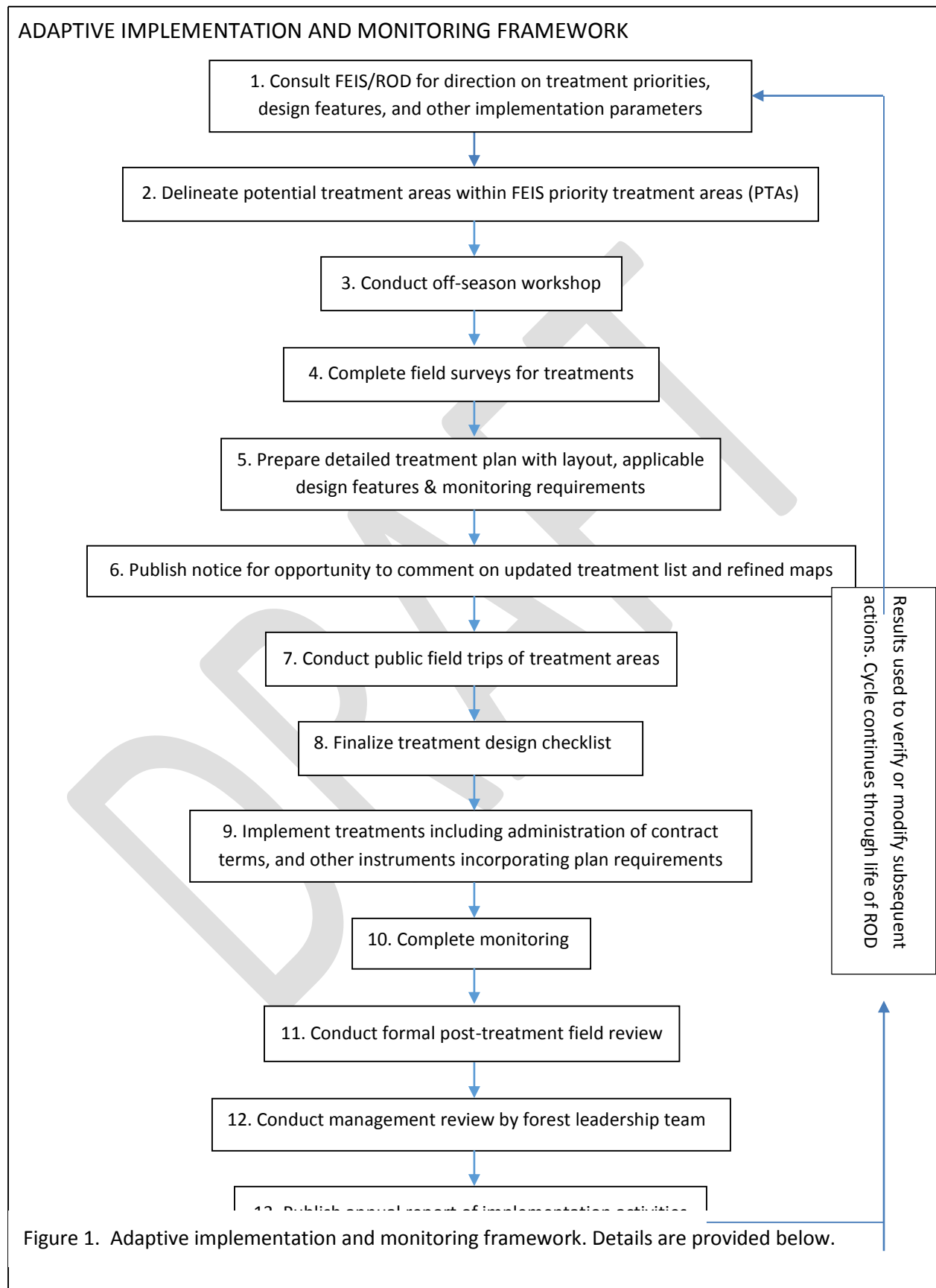
The SBEADMR FEIS/ROD specifies this adaptive implementation framework for defining treatment locations and design, determining monitoring questions, reviewing and evaluating the effects of treatments, and adjusting management towards desired conditions and away from undesirable conditions. These actions will involve public stakeholders, the science team, and forest staff. The public participation and collaboration process that occurred during the planning process was significantly aided by the efforts of a collaborative workgroup of diverse stakeholders. This group has indicated that it would like to continue convening and facilitating collaborative work to assist in applying this adaptive framework. Specific phases and activities are outlined below. The intent is that this adaptive implementation framework will be utilized over a multi-year timeframe (8-12 years).

Stakeholder opportunities to influence SBEADMR implementation are outlined for each step of the process. Opportunities are confined by the sideboards of the selected alternative, as outlined in the Final Environmental Impact Statement (FEIS) and Record of Decision (ROD). Further, the Forest Service retains the authority to make final decisions related to location, extent and types of treatments planned and completed consistent with the FEIS/ ROD. However, if at any-time a stakeholder has a specific question or concern related to any aspect of implementation under SBEADMR, forest staff will respond to stakeholder input to the greatest extent practicable and will provide feedback to stakeholders about how their concerns were addressed. The process outlined here is required by the ROD and stakeholder involvement will be ongoing throughout the life of the project.

The adaptive implementation steps will cover pre-implementation treatment planning; post-implementation review; annual monitoring, evaluation, and new science integration; and annual management review with forest leadership team.

Commercial and non-commercial treatments that occur under the authority of the FEIS/ ROD will take up several years to pass through all the phases of implementation. Therefore, at any given time there will be several projects occurring that have passed through different steps of implementation and monitoring. The public will be invited to participate as discussed below.

DRAFT



**Step 1) Consult the FEIS/ROD for direction on treatment priorities, design features, and other parameters.**

The direction in the FEIS/ROD reflects comprehensive public participation and collaborative efforts conducted over a three-year planning period. The public had opportunities to influence all elements of these documents.

***Stakeholder Opportunities:***

- A. Become familiar with the implementation parameters of the FEIS/ROD to develop an understanding of these limits and requirements and enhance ability to more meaningfully participate in implementation and adaptive management;
- B. Treatment needs outside of the FEIS/ROD would need to be addressed under separate planning efforts.

**Step 2) Delineate treatment units within the FEIS priority treatment areas (PTAs).**

The priority treatment areas (PTAs) will form the bounds for out-year SBEADMR treatments that become part of the normal Forest Service program of work, including the 5-year timber-sale, fuels management, and wildlife habitat programs. Nearer-term treatment units will be delineated with more detail, while out-year treatments may be shown with broader PTA boundaries.

***Stakeholder Opportunities:***

The forest will share information on the details of proposed treatment units as it becomes available, thereby enabling the collaborative workgroup (Adaptive Management Group) all stakeholders the opportunity to learn about implementation activities prior to the subsequent steps. Updated information will be posted on the forest website.

**Step 3) Conduct off-season workshop with stakeholders and science team.**

Each year a winter or spring workshop will be held with stakeholders, treatment implementation team, and forest leadership team members to discuss implementation program, including:

- Proposed new out-year treatments;
- Report status of treatments already planned/in process of being implemented;
- Findings from the prior-year management review of treatments and the out-year program of work;
- Monitoring results to date and proposed coming-year and out-year multi-party monitoring;
- Evaluation and feedback on potential need for change in implementation or monitoring practices;
- New science and individual studies within the context of the larger body of scientific literature;

- Updates and future use of GIS prioritization tool.

***Stakeholder Opportunities:***

- A. Review updated maps of proposed treatment units, evaluate, discuss and comment on priority sequencing of treatments, treatment prescriptions, EIS/ROD compliance.
- B. Provide feedback to the Forest Service regarding prior-year Management Review;
- C. Input on types and location of monitoring. Participants will be invited to participate in monitoring during summer field trips;
- D. Identify applicable peer-reviewed science to be considered in annual science summary;
- E. Raise questions and make suggestions to be considered for further administrative study and multi-party monitoring.

**Step 4) Complete field surveys of treatment units.**

Forest Service personnel will conduct initial field surveys of proposed treatment units to confirm that treatments can be designed and implemented in conformance with FEIS/ROD parameters, and how to do so.

***Stakeholder Opportunities:***

The results from this agency effort will develop refined implementation products that will further inform the public in the following steps.

**Step 5) Prepare refined treatment plans and implementation instructions, including applicable design features, unit layout guidance, road work, and monitoring requirements, including selection of applicable design features.**

Confirm design features to be applied to the given treatment. These are actions that will be incorporated in a treatment when resource conditions indicate the need to do so. For example, presence of a goshawk nest in a proposed treatment area triggers the use of design features to protect goshawk. Treatments will be adjusted as needed to conform to requirements or treatments will be deferred.

***Stakeholder Opportunities:***

- A. Detailed treatment plans will be posted on the forest website and available for public review as part of Step 6.
- B. Forest implementation team will assist the Adaptive Management Group and other stakeholders in interpreting detailed plans.

**Step 6) Publish notice of opportunity to comment on updated treatment list, treatment plans, refined maps, and schedule.**

Publication of the updated treatment list, status of implementation activities, refined treatment plans and maps will provide a broad audience of public participants an opportunity to stay informed of and comment on treatment implementation priorities, on-the-ground treatment design, and monitoring activities. This will be an additional opportunity benefiting those participants who are not available to participate in field trips and meetings. The review and comment period will run for 30 days. Comments will be considered by the implementation teams and responsible official and used to adjust treatment plans as warranted.

***Stakeholder Opportunities:***

Provide comments and recommendations to responsible official and district implementation teams concerning:

- C. Selection and scheduling of priority treatments;
- D. Types and locations of planned treatments;
- E. Monitoring topics, questions, and priorities;
- F. Application and adequacy of design features;
- G. Treatment conformance to scope of FEIS/ROD, disclosure of environmental effects, and adherence to decision parameters.

**Step 7) Conduct public field trips of treatment areas.**

Every year the public will be invited to interact with the GMUG staff and science team members on SBEADMR implementation field trips. Each of the timber management zones (Gunnison Ranger District, Norwood-Ouray Ranger Districts, and Grand Valley-Paonia Districts) will host a trip. Field review will focus on pre-treatment areas; however post-treatment and monitoring activities will likely be viewed on the same trip. There will be between 1-3 trips per field season, depending on public interest.

***Stakeholder Opportunities:***

- A. View changing conditions on the ground and discuss adaptive management principles;
- B. Collaborative learning about on-the-ground conditions before and after treatment;
- C. Discuss treatment rationale (fit to FEIS/ROD parameters) and treatment objectives;
- D. For pre-implementation site visits, identify treatment-specific resource concerns. District IDT will seek to resolve resource concerns identified by the public to the greatest extent practicable.
- E. For post-treatment site visits, IDT members will provide results from formal findings described in Appendix D--identified surveys, design features, and post-treatment monitoring.
- F. Identify recommended treatment-level and project-wide adaptations;
- G. View areas where monitoring activities have occurred and discuss findings.
- H. View areas or discuss what treated areas will look like 10, 20, or more decades into the future—will desired conditions be met?

**Step 8) Finalize treatment design checklist and implementation package (timber sale contract, stewardship contract, burn plan, etc.)**

The GMUG implementation team will prepare final treatment pre-treatment checklist (FEIS Appendix C), contracts, agreements, burn plans, or other implementation instruments as reflective of this framework.

***Stakeholder Opportunities:***

Final documents will reflect public participation in previous steps and will be available for public review.

**Step 9) Implement treatments, including administration of contract terms and other instruments incorporating plan requirements.**

Administration of activities provides records of treatment compliance or approved modifications with rationale. This information will contribute to Steps 9-13.

**Step 10) Complete treatment monitoring as specified in the final treatment design checklist and science team study plans.**

Monitoring activities will be specified in pre-treatment checklist (FEIS Appendix C) and the ongoing work of the science team. The final set of monitoring activities will be responsive to the public input received in the previous steps. Monitoring results will be used to inform agency and public dialog and deliberation on adaptive management adjustments to the treatment.

***Stakeholder Opportunities:***

- A. Participate in interpretation and use of monitoring data post-treatment reviews and mid-winter meeting.
- B. Discuss potential changes in treatments as indicated by monitoring results.
- C. Recommend changes in monitoring activities to better serve collaborative learning and adaptive management.
- D. Participate in field monitoring opportunities identified in the science team program of work.

**Step 11) Conduct formal post-treatment review.**

Each year the forest will conduct one formal post-treatment to provide stakeholders the opportunity to interact directly with Forest Service implementation teams, line officers, and science team members. Stakeholders will be invited to help select the commercial harvest, non-commercial mechanical treatments, or broadcast burning treatment subject to the review. This formal agency review will:



- Demonstrate treatments are implemented in accordance with the EIS/ROD and other requirements or identify corrective actions.
- Ensure Forest accountability to stakeholders and show that treatments are being implemented in accordance with best available scientific evidence through the iterative treatment design and monitoring cycle.
- Ensure Forest accountability to stakeholders that pre-treatment input was considered in treatment location, design, implementation, and follow-up.
- Provide specific feedback to regulatory agencies (e.g. Fish and Wildlife Service, State Historic Preservation Office, and EPA), documenting compliance with law and regulation specific to the SBEADMR ROD.
- Provide summary of findings and any recommended changes (from IDT and/or stakeholders) to treatment design and layout, best management practices (BMPs), design features, or other aspects of a treatment in a report submitted to the forest leadership team. Findings, including recommendations, will be addressed during the management review (Step 12).

***Stakeholder Opportunities:***

- A. Provide evaluation and feedback on whether treatment implementation met expectations and was responsive to overall treatment objectives and FEIS/ROD requirements;
- B. Provide evaluation and feedback about how well pre-treatment public input was incorporated into treatment design and implementation;
- C. Develop treatment-specific input and recommendations informed by the preponderance of scientific evidence, such as effectiveness of design features to address resource concerns;
- D. Foster dialog on implementation or monitoring concerns with IDT and science team, and develop recommendations for improvements.
- E. Describe perceptions about whether desired conditions have been or will be met with treatments and follow-up activities.

**Step 12) Complete management review by the GMUG forest leadership team.**

The goal of this step is to make certain GMUG leadership stays engaged in addressing environmental, social and management issues and takes action for continual improvement and incorporation of new knowledge during SBEADMR implementation. Final decision of management review will be applied to all future planned treatments under SBEADMR. The review will cover:

- Environmental and management issues resulting from SBEADMR implementation, and actions necessary to address concerns;
- Stakeholder recommendations and corresponding forest responses, provided at multiple stages throughout the year;
- Post-treatment IDT review;
- Information provided from multi-party monitoring efforts;
- New best available science summarized by the science team;

- Changes in agency policy or direction;
- Changed conditions (such as the US Fish and Wildlife Service listing a species as threatened or endangered);
- Conclusions on whether the reviewed information warrants modifications to SBEADMR implementation, and whether such changes are within the scope of the ROD/EIS.

**Step 13) Publish annual report of implementation activities, stakeholder participation, and management review findings.**

Following completion of the annual management review, the GMUG will publish on the forest website a summary of all the steps in this adaptive implementation and monitoring framework. The goal is to transparently ensure compliance with the FEIS/ROD, applicable laws/regulations, and integration of best available science throughout the life of the ROD; and to demonstrate responsiveness to public participation in this framework.

***Stakeholder Opportunities:***

- A. Review annual report to stay informed of SBEADMR implementation activities;
- B. Plan future participation in implementation and monitoring as the GMUG moves forward, repeating the steps of the annual framework.