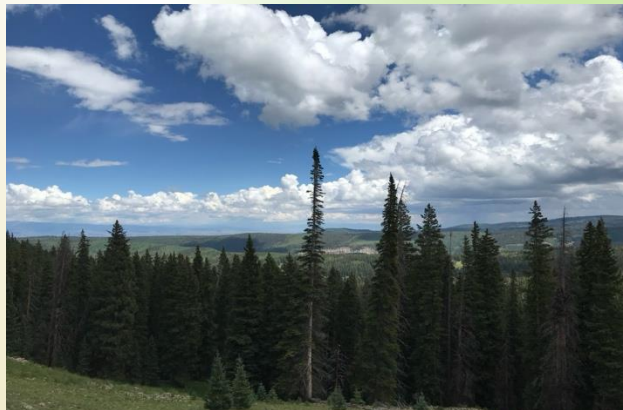


Assessing progress and performance of the SBEADMR collaborative monitoring and adaptive management process



Tyler Beeton and Tony Cheng
Colorado Forest Restoration Institute (CFRI),
Colorado State University
Tyler.Beeton@colostate.edu



Is the collaborative adaptive management process functioning as it was originally intended in FEIS and expected by participants?



Key informant interviews

- 12 semi-structured interviews
- Baseline information on how SBEADMR meeting goals, participant expectations, successes, challenges, recommendations

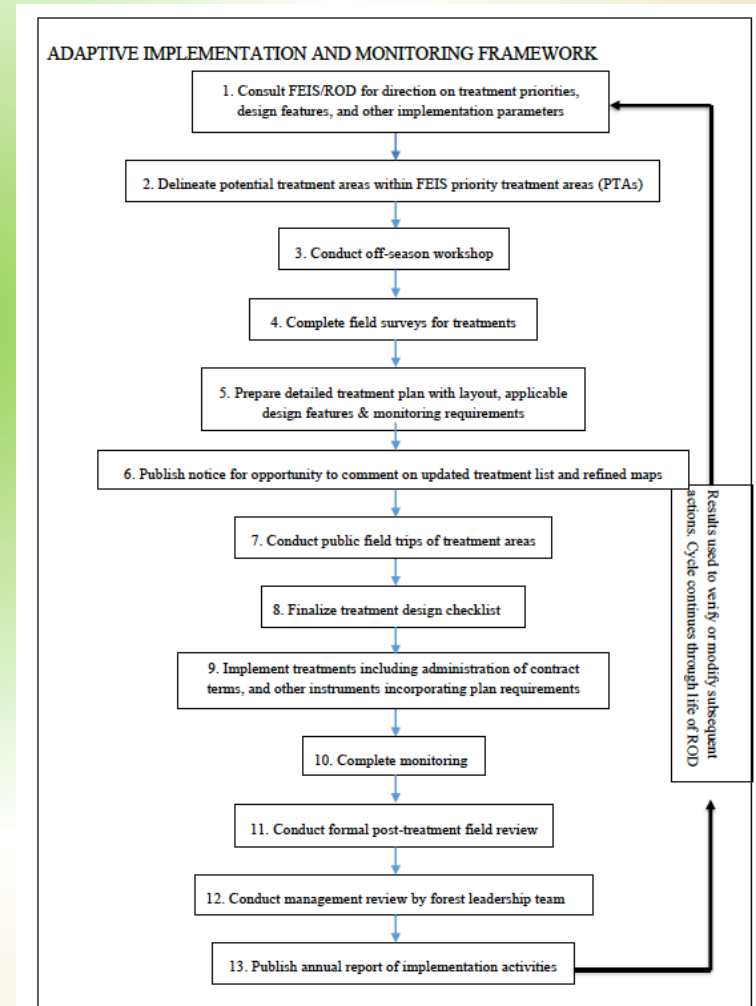
Questionnaire

- Online (Qualtrics)
- Grounded in findings from interviews
- Piloted by SBEADMR participants
- Administer to – FLT, AMG, Science Team, Resource Specialists, partners, public
- Distribution – SBEADMR Listserv – 58 usable responses (30% of sample)

Appendix E:

Public Engagement in Adaptive Implementation

A Process for Adaptive Implementation of the Spruce Beetle Epidemic-Aspen Decline Management Response EIS



son National Forest

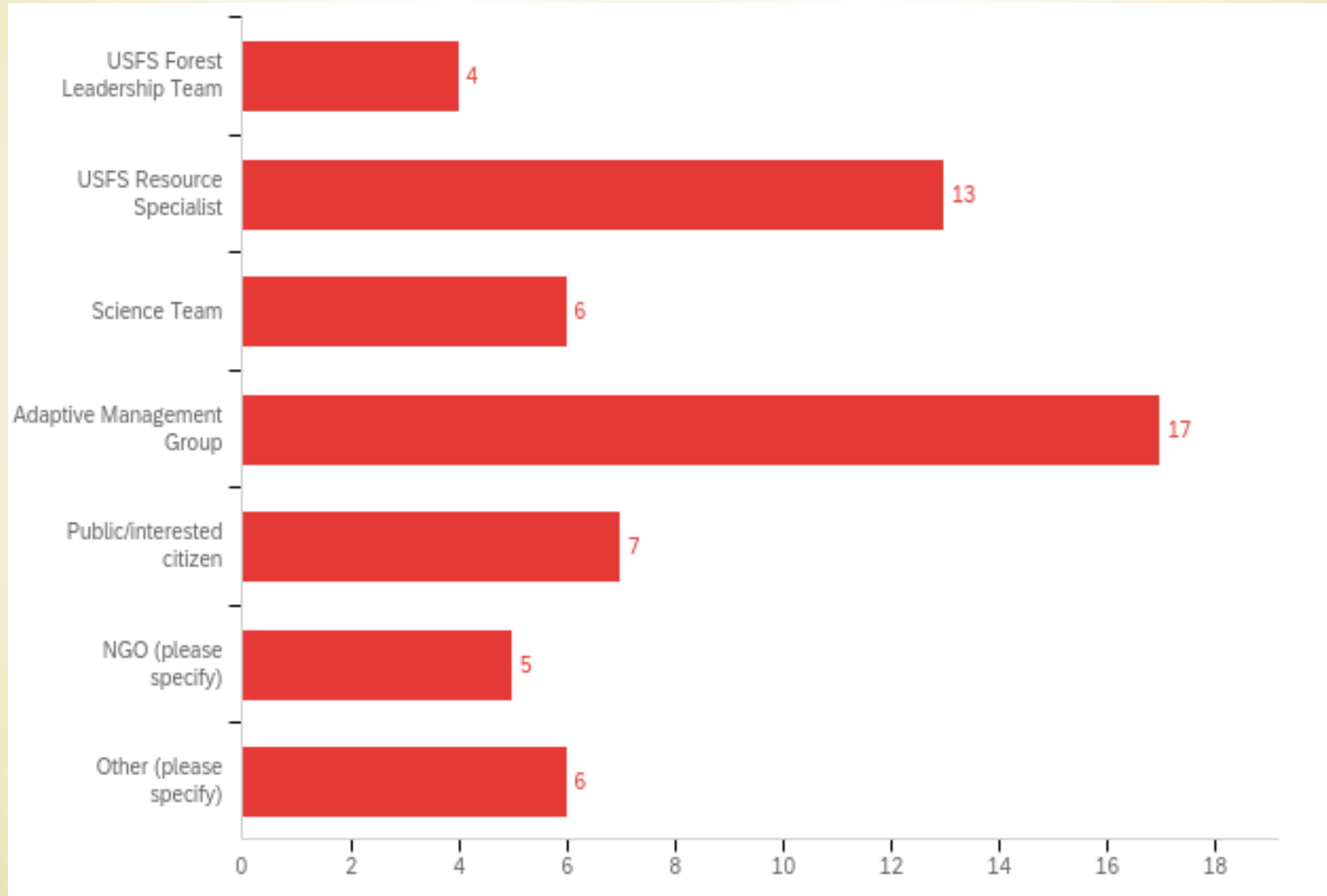
DA Forest Service
Colorado State University

Survey participation



SBEADMR
Sub-groups

Public &
Partners



Summary of findings and agenda for today



- Participants generally agree that SBEADMR meeting EIS objectives and stakeholder expectations
- Though areas for improvement
- We offered several actionable recommendations for the SBEADMR group to consider
- **Today** – Review recommendations, identify priority list



Questions to consider...



1. Do these suggested recommendations resonate with you?
2. Do you have other specific recommendations not included here that would improve the collaborative process?
3. Which of these stand out and should be a priority?



Theme	Example recommendations
Increase engagement and outreach	<ul style="list-style-type: none"> -Engage with groups who have not historically been involved (e.g., CPW, Tribes, CO DNR) -Reduce turnover and vacancies in AMG/FS Staff -Consider membership composition of AMG -Increase new and traditional modes of communicating to the public -More opportunities to engage with communities and District Rangers/Staff -County commissioner representation at field trips -Hire a communication specialist or coordinator
Shared learning, understanding and transparency	<ul style="list-style-type: none"> -Field trips: pre- and post- in same location; debriefs -Shared understanding of resilience concept in context of SBEADMR -Process for integrating scientific information brought to the group -Be more transparent about how science informs lynx management and mitigation -Develop onboarding processes for new participants
Collaboration throughout the process	<ul style="list-style-type: none"> -Provide more detail on planned treatments during out-year planning -Increase opportunities for dialogue with AMG, FLT concerning what adaptations were made, and why or why not -Enhance communication internally with GMUG staff
Outputs and outcomes	<ul style="list-style-type: none"> -Evaluate success and challenges of process and document SBEADMR model of collaborative adaptive management in reports, blogs, publications -Enhance readiness to receive increased state and federal funding for wildfire mitigation – link to wildfire risk modeling, decision-support (PODs), and pivot towards fuels mitigation and fiber harvest

Priorities and timeline – what can we do and when should we do it



1. Insert priorities here