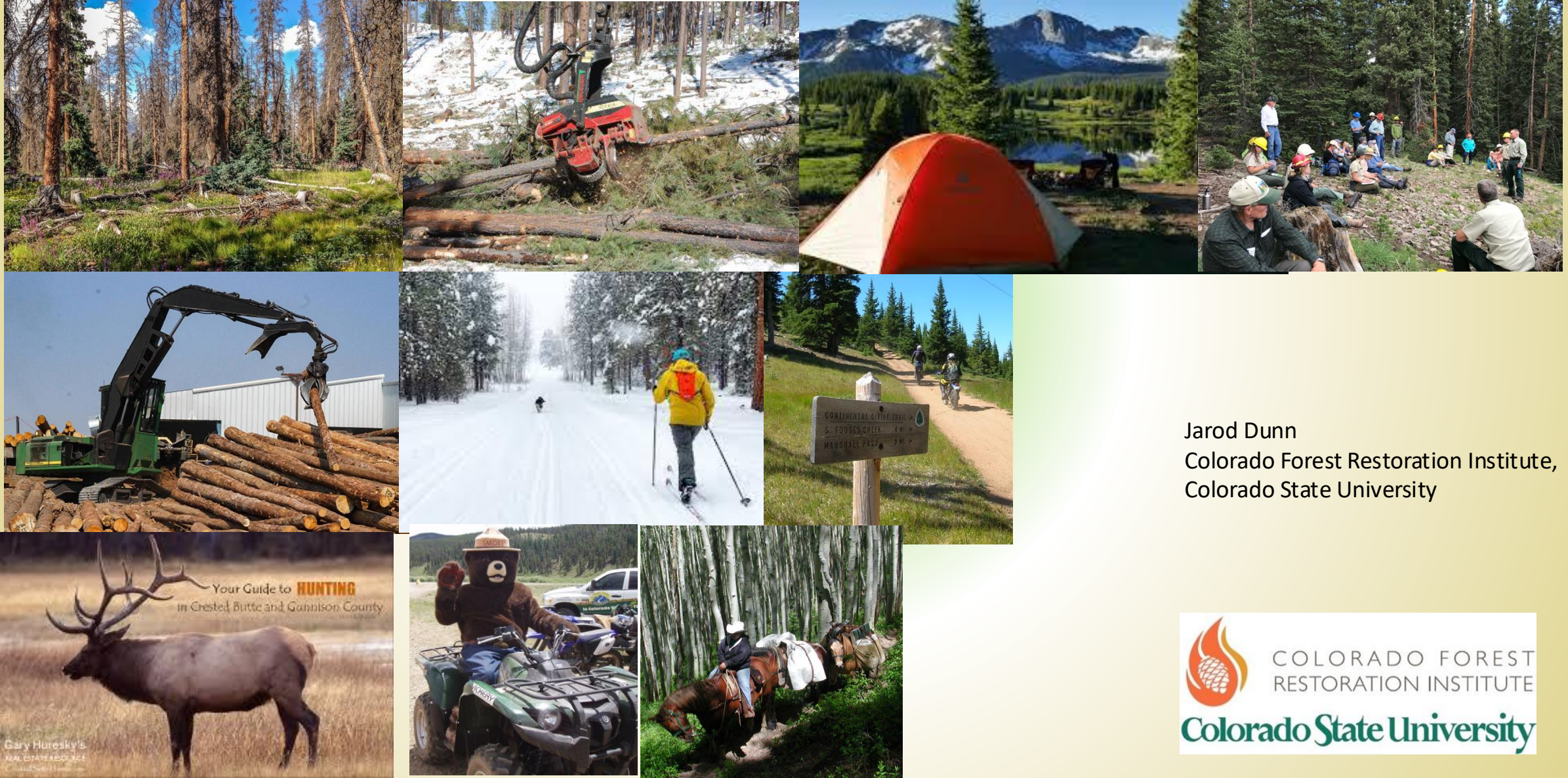


SBEADMR Annual Meeting Update on Socio-Economic Monitoring Results

February 22nd-23rd, 2021



Jarod Dunn
Colorado Forest Restoration Institute,
Colorado State University

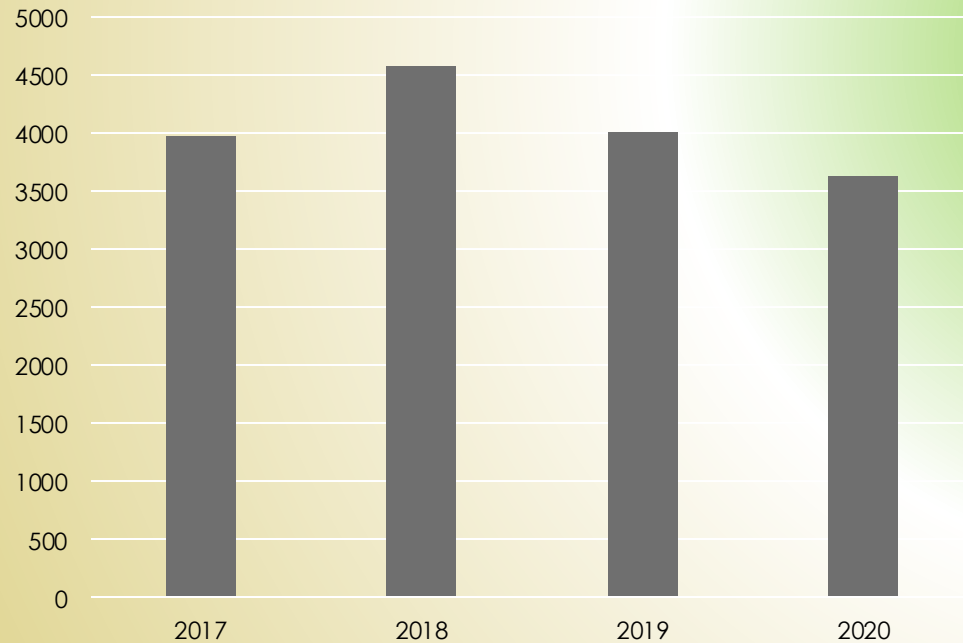


SBEADMR Annual Meeting Update on Socio-Economic Monitoring Results

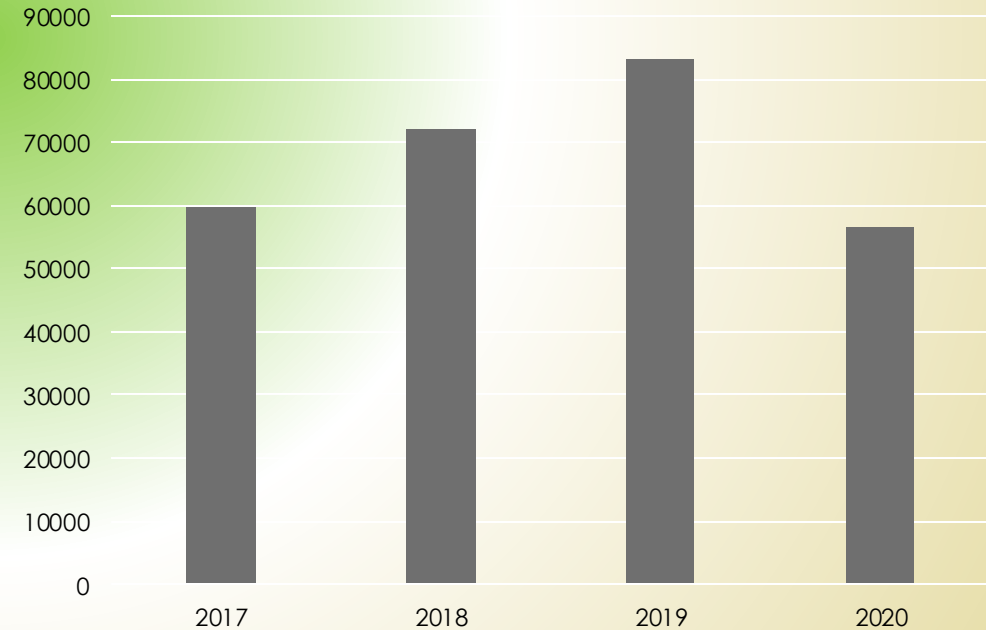
To what extent does timber output and revenue change over the SBEADMR project timeframe?

- Acres treated and timber volume (CCF):

Acres Treated FY 2017-2020*



Timber Volume Produced (CCF) FY 2017-2020*



*(Q1, Q2 2020)

SBEADMR Annual Meeting Update on Socio-Economic Monitoring Results

To what extent does timber output and revenue change over the SBEADMR project timeframe?

- Commercial Revenue per volume (\$/CCF):
2017 \$9.16; **2018** \$11.14 (2019 and 2020 revenue TBD)
- A single no-bid took place in 2020, Kannah Timber Sale, due to winter logging restrictions.
- Over \$1.5 million has been collected over project lifespan with Montrose Forest Products as the primary purchaser (88%), CSFS (12%), and others (<1%).

SBEADMR Annual Meeting Update on Socio-Economic Monitoring Results

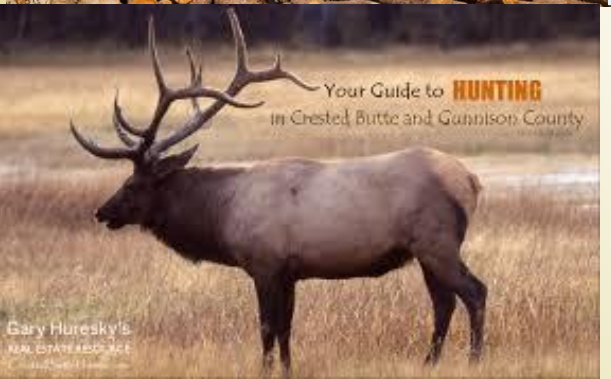
In what ways does the SBEADMR project contribute wood volume to the wood products industry that sustains the interdependence of producers?

- 60% of timber volume produced utilized by Montrose Forest Products (MFP). 26% by Colorado State Forest Service. 7% by the National Wild Turkey Federation. The remaining 7% went to various small purchasers.
- MFP produced multidimensional lumber from Spruce, Lodgepole pine, Sub-Alpine fir and White fir harvested from SBEADMR timber sales.
- 6 documented producers from 2017-2020 dominated by MFP.

SBEADMR Annual Meeting Update on Socio-Economic Monitoring Results

What are direct non-government employment impacts on wood producers from SBEADMR project implementation?

- SBEADMR timber sales are reported as important to maintain current level of production at Montrose Forest Products.
- No additional manpower has been added to sawmill staff, no additional loggers, or log truckers hired as a direct result of SBEADMR timber.



Jarod Dunn
Jarod.Dunn@Colostate.edu

Colorado Forest Restoration Institute,
Colorado State University

