

# GMUG SBEADMR Treatment Implement Data Sheet

Fiscal 2020

Treatment: Rainbow

District: Gunnison

Proposed Treatment Acres: 1,200

Planned Treatment Acres: 1,200

Cover Type: Spruce/fir/aspen

**Integrated Treatment Objectives:** Resiliency Treatment- group selection of 25% of the stand in ~1/2 acre groups; Fuels removal and fuel loading reduction; Provide hare, marten, and lynx denning habitat; Snag retention, and landscape-scale habitat connectivity; Meet post-harvest tree stocking objectives; Road maintenance

**Desired Condition:** Uneven-aged stand structure, increased species composition, appropriate tree stocking levels based on objectives.

Estimated Miles of Temporary Road Construction: 5

## Known Design Feature Triggers

- Areas of high weed potential
- Lynx and Pine Marten
- Potential for dusky grouse habitat integration
- Wilderness area
- Colorado Roadless Area
- Dispersed camping area/outfitter guides
- Haul route through elk winter range and Gunnison Sage Grouse habitat

## Cumulative Watershed Disturbance

Watershed	Acres of National Forest Lands	Baseline disturbance acres <sup>1</sup>	Rainbow Treatment Acres				
			Acres of temporary road <sup>2</sup>	Acres of harvest <sup>3</sup>	Reasonable foreseeable <sup>4</sup>	Cumulative Disturbance (%)	Exceeds 20% trigger in EIS?
East Elk Creek	10,197	796	2	23	0	8	No
Willow Creek-Blue Mesa Reservoir	7,702	338	22	217	0	7	No

<sup>1</sup>Existing infrastructure and roads weighted at 100% disturbance (1 acres = 1 acre) plus past vegetation disturbance weighted at 25% disturbance (4 acres = 1 acre of disturbance).

<sup>2</sup>One mile of road construction = 4.8 acres of disturbance.

<sup>3</sup>Vegetation management disturbance weighted at 25% disturbance (4 acres = 1 acres)

<sup>4</sup>Reasonable foreseeable vegetation disturbances weighted at 25% disturbance (4 acres = 1 acre).

**Lynx Analysis Units (LAUs): Red Creek**

Lynx Analysis Unit	Total Acres of lynx habitat	Baseline disturbance acres and percent unsuitable <sup>1</sup>	Rainbow Treatment Acres				
			Acres of road <sup>2</sup>	Acres of harvest converting to unsuitable <sup>3</sup>	Reasonable foreseeable <sup>4</sup>	Cumulative Disturbance (%)	Exceeds 25% trigger in EIS?
Red Creek	44,930	3,113	24	45	66	7	No

<sup>1</sup>Existing infrastructure and roads weighted at 100% disturbance (1 acres = 1 acre) plus past vegetation disturbance weighted at 25% disturbance (4 acres = 1 acre of disturbance).

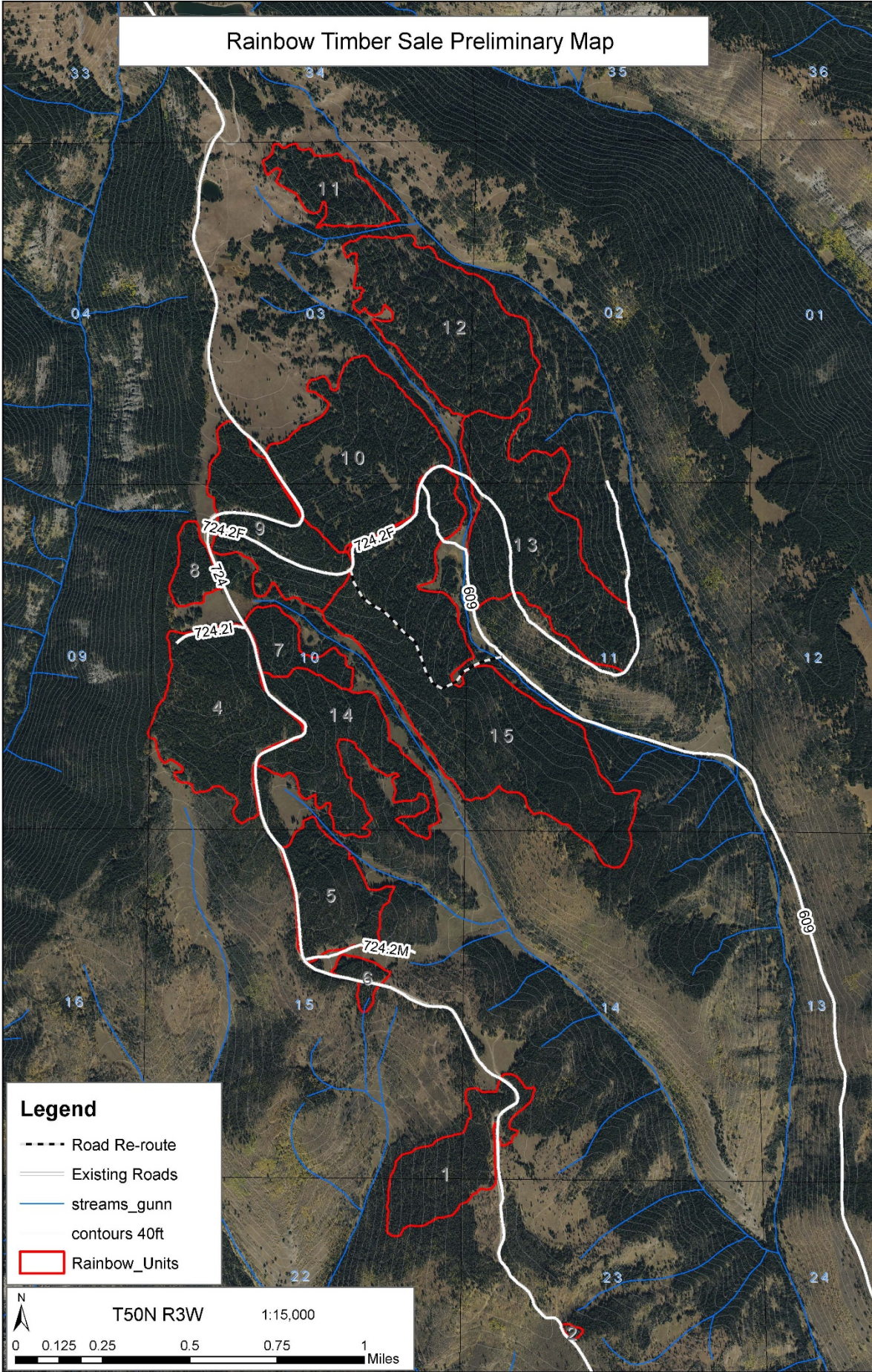
<sup>2</sup>One mile of road construction = 4.8 acres of disturbance or conversion of 4.8 acres of lynx habitat to unsuitable.

<sup>3</sup>In single storied stands with high overstory mortality, lynx habitat is considered unsuitable. In multi-storied stands with live understory, the lynx habitat is considered suitable. Therefore, loss due to logging activities is considered incidental and is a result of harvest method.

<sup>4</sup>Reasonable foreseeable vegetation disturbances weighted at 25% disturbance (4 acres = 1 acre).

Technical Contact: Johanna Nosal; [jnosal@fs.fed.us](mailto:jnosal@fs.fed.us); 970-642-4445

# Rainbow Timber Sale Preliminary Map



## Legend

- Road Re-route
- ==== Existing Roads
- streams\_gunn
- contours 40ft
- ▭ Rainbow\_Units

